

BRINGING ARTIFICIAL INTELLIGENCE TO DEVICES

nex-plex.com

Develop, invent, and create platform for ease of data monitoring, control and prediction.

nex-plex SAMS MKIII

Powered by



IoT gateways designed with version 4.0 signature features.

- Slick design
- Industrial grade temperature range
- Accurate real time data
- Passive & active antenna support
- Wide connection



nex-plex

SAMS MKIII

Powered by



What is nex-plex IoT Gateway?

Nex-plex is an intelligently connected device and data processing system designed to leverage accurate real-time data through our gateway platform SAMS MKIII. Nex-plex unleashes new gamut of services and IoT applications to increase the effectiveness of productivity of enterprises.

Nex-plex meets the needs of customers with a universal gateway platform to give life-enhancing services across a wide range of domestic and industrial applications.



Features

Processor	Microcomputer processor.
IoT Ready	Breadth of connectivity options: optional cellular modem, lora, wifi, bluetooth, ethernet, Dual Gigabit Ethernet, analog & digital I/Os.
Industrial Grade	Wide operating temperature, wide range of power supply with transient protection.
Support	Native support for Modbus, and independant platform.
Cloud Certified	Seamless integration with Microsoft Azure, Amazon Web IoT and other Cloud Services

-  **Plug & Play**
-  **Universal Gateway for Wide Variety of Applications**
-  **Smart Connectivity & Simple data Monitoring**

Nex-plex is an IoT solution that provides remote monitoring and control for various industries, including agriculture, aquaculture, automotive, and so forth. It presents an opportunity for new commercial models to support global deployments.

BRINGING ARTIFICIAL INTELLIGENCE TO DEVICES

nex-plex.com

Develop, invent, and create platform for ease of data monitoring, control and prediction.

Nex-plex is a customized IoT solution platform which integrates device connectivity, security and processing power for global IoT applications.



- ✔ **Plug & Play**
- ✔ **Universal Gateway for Wide Variety of Applications**
- ✔ **Smart Connectivity & Simple data Monitoring**

Nex-plex is an IoT solution that provides remote monitoring and control for various industries, including agriculture, aquaculture, automotive, and so forth. It presents an opportunity for new commercial models to support global deployments.



01 Connect your sensor or device to nex-plex.



02 Power on, and configure nex-plex.



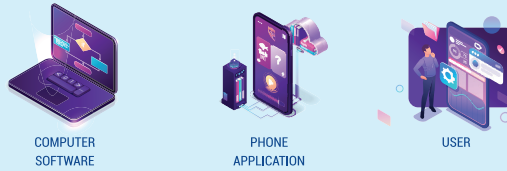
03 You are ready to use and connect to the cloud safely and securely.

How nex-plex works?

nex-plex SAMS MKIII

User Layer

Logic, monitoring, controls and predictions.



- Head of Department
- Owner
- Supervisor
- User
- Client

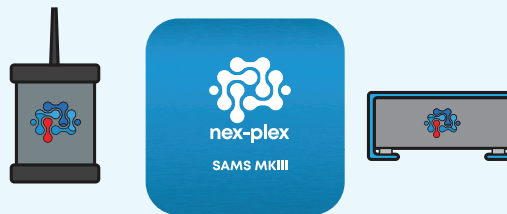
Cloud Layer

Use of various communication protocols to transport valuable data to other device, cloud and server.



IoT Layer

Computations, data analysis, algorithms and arithmetic.



- RFID Tag
- GPS Tracker
- QR Code
- Camera
- RFID Reader
- Sensors data

Process Layer

Data acquisition, data processing and data filtration / mapping.



- Sensors
- Client devices
- Universal application
- Wired / Wireless

Nex-plex is an IoT solution that provides remote monitoring and control for various industries, including agriculture, aquaculture, automotive, and so forth. It presents an opportunity for new commercial models to support global deployments.

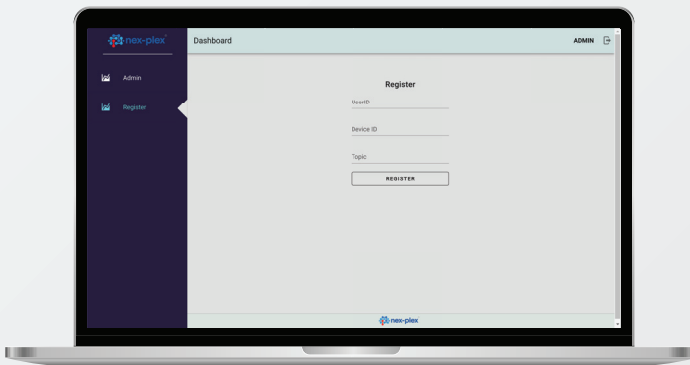
Visit www.nex-plex.com for more info and support.

Application Dashboard

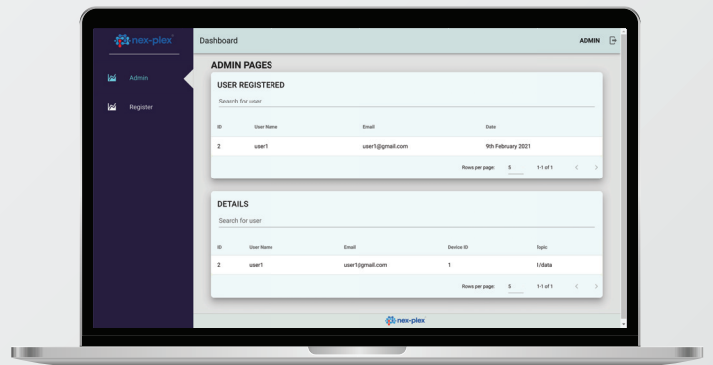
Login Panel



Admin Panel - User Registration



Admin Panel - User Dashboard



Admin Panel - Current (Real-time Data)



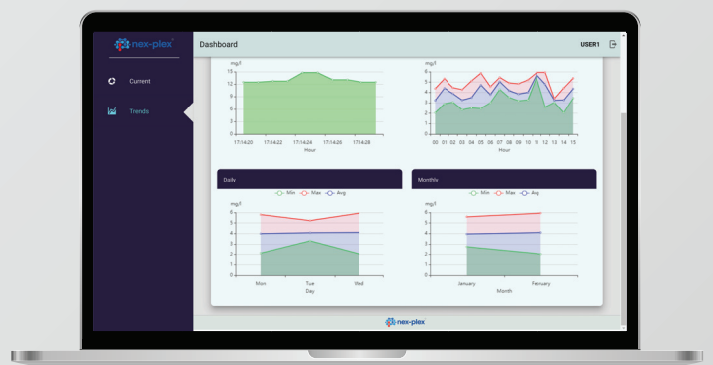
Admin Panel - Current (Summary & Server Health)



Admin Panel - Trend



Admin Panel - Trend



nex-plex

SAMS MKIII

Powered by



Datasheet

OPTION	SPECS	*TRANSMITTER	*RECEIVER
Ethernet	IEEE 802.3-100Mbps RJ45		✓
RADIO Interfaces	Wi-Fi	✓	✓
	LoRA	✓	✓
	Antenna (External)	✓	✓
	Bluetooth		✓
I/O Interfaces	Antenna port	✓	✓
	USB 2.0/3.0		✓
	Ethernet port		✓
	Power port	240VAC	Type-C
	Device/sensor input	✓	
CPU		32 Bit Chipset	64 Bit Chipset
Power	5VDC	✓	✓
Power Consumption		1.5W	3.4W
Operating Temp	20-70	✓	✓
Mechanical	Dimension	106x56x136	133x109x55

SOFTWARE

OS	Debian
IoT Stack Framework	Java
	Python
	C++

As part of the continual product improvement process, nex-plex reserves the right to alter the specifications of this product.

© Copyright. nex-plex and the nex-plex logo are registered trademarks of nex-plex. All third-party trademarks are the property of the respective owners.

MH DELIMA SDN BHD

B-1-38 Komplek Suria Kinrara,
Persiaran Kinrara Seksyen 3, Taman Kinrara Seksyen 3,
47100 Puchong, Selangor, Malaysia.

Contact: +603 8080 9639 / sales@mhdelima.com
www.mhdelima.com.my